

CERTIFIED LAND CORNER RECORDATION

DESCRIPTION OF CORNER EVIDENCE FOUND, AND ORIGINAL RECORD (if known)

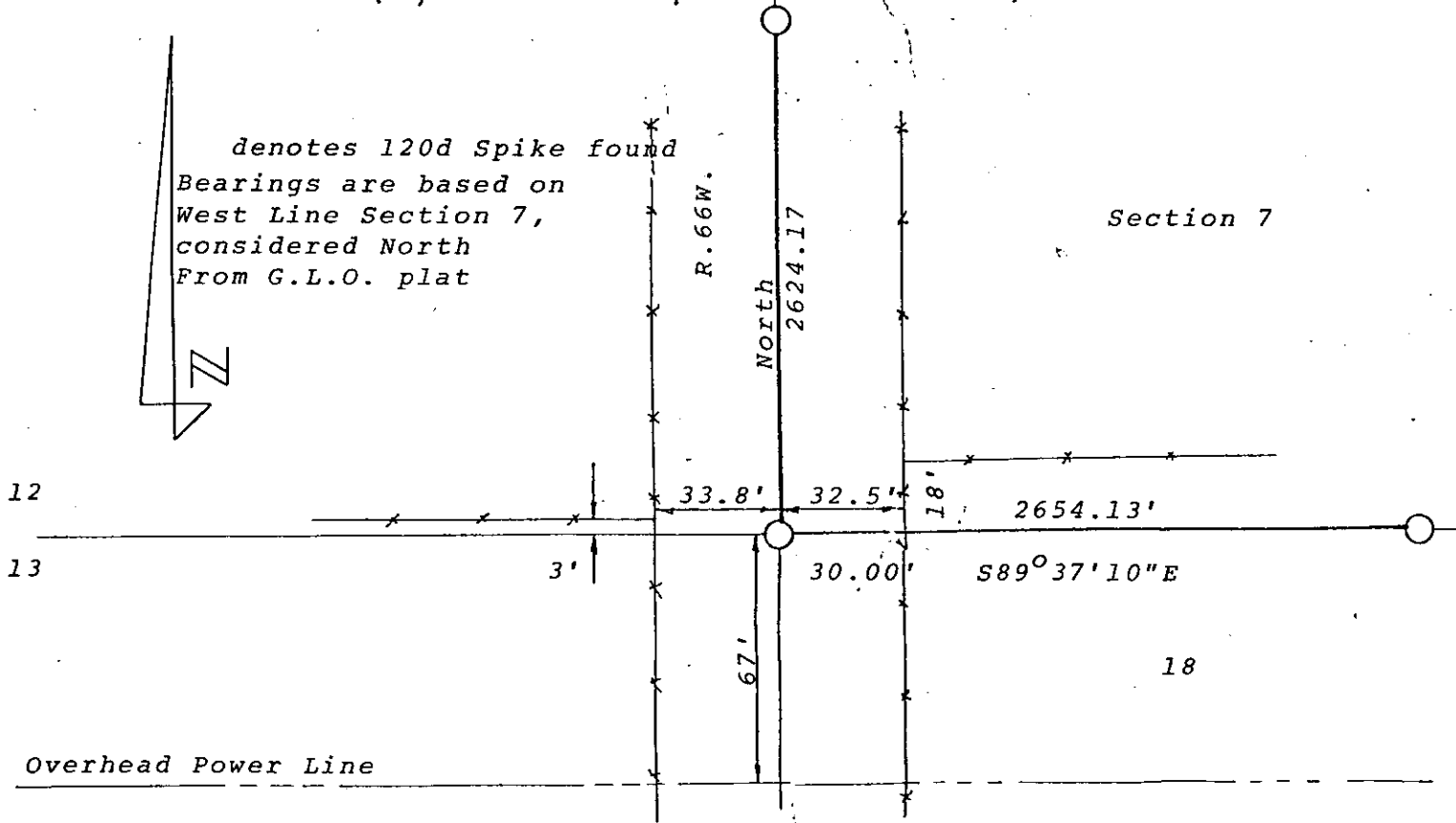
SC 12 13 R. 66W. T. 14N., 6th P.M. Laramie County, Wyoming	7 18 R. 65W. T. 14N., 6th P.M. Laramie County, Wyoming	<u>Record</u> 1870, G.L.O. set Granite Boulder <u>Found</u> 120d spike 30' East of Corner
---	--	--

DESCRIPTION OF MONUMENT AND ACCESSORIES ESTABLISHED TO PERPETUATE THE ORIGINAL LOCATION OF THIS CORNER:

At the Corner
 Set a 2" dia. X 30" long iron pipe with Brass Cap.

Accessories
 120d spike 30.00' Easterly on Section Line.

SKETCH, WITH COURSE AND DISTANCE TO ADJACENT CORNER IF DETERMINED IN THIS SURVEY.
 (May Sketch or Paste Reproduction on Reverse Side.)



I, Glen L. Roberts certify that I have carefully performed or reviewed the work done on the diagrammed corner as reported on this recordation form and approve the same.

Glen L. Roberts Wyoming P.E. & L.S. #347
 Signature of Surveyor Registration No.

STATE OF WYOMING,
 Office of Clerk and Recorder,
 County of Laramie

568603

This "corner record" was filed for record on the FEB 1 1980 day of 19, was noted on the cross-index plat and is assigned page No. _____, in book No. _____

Janet C. Whitehead
 County Official

Cross Index No. _____	T. _____	R. _____	Mer. _____
<u>J-1</u>	T. <u>14</u>	R. <u>65</u>	Mer. _____
<u>J-25</u>	T. <u>14</u>	R. <u>66</u>	Mer. _____
_____	T. _____	R. _____	Mer. _____
_____	T. _____	R. _____	Mer. _____
_____	T. _____	R. _____	Mer. _____
_____	T. _____	R. _____	Mer. _____

J-1 14-65

